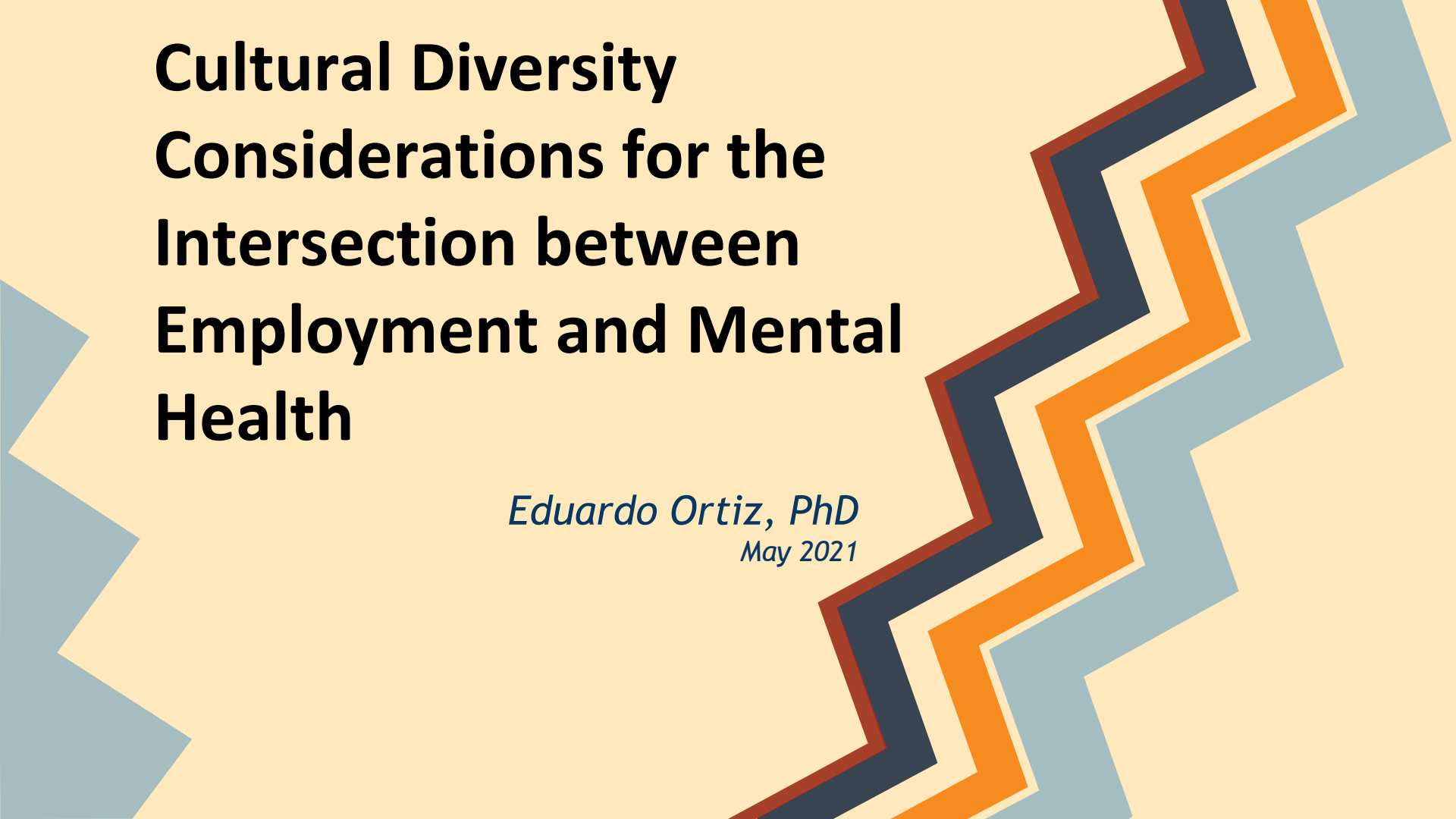
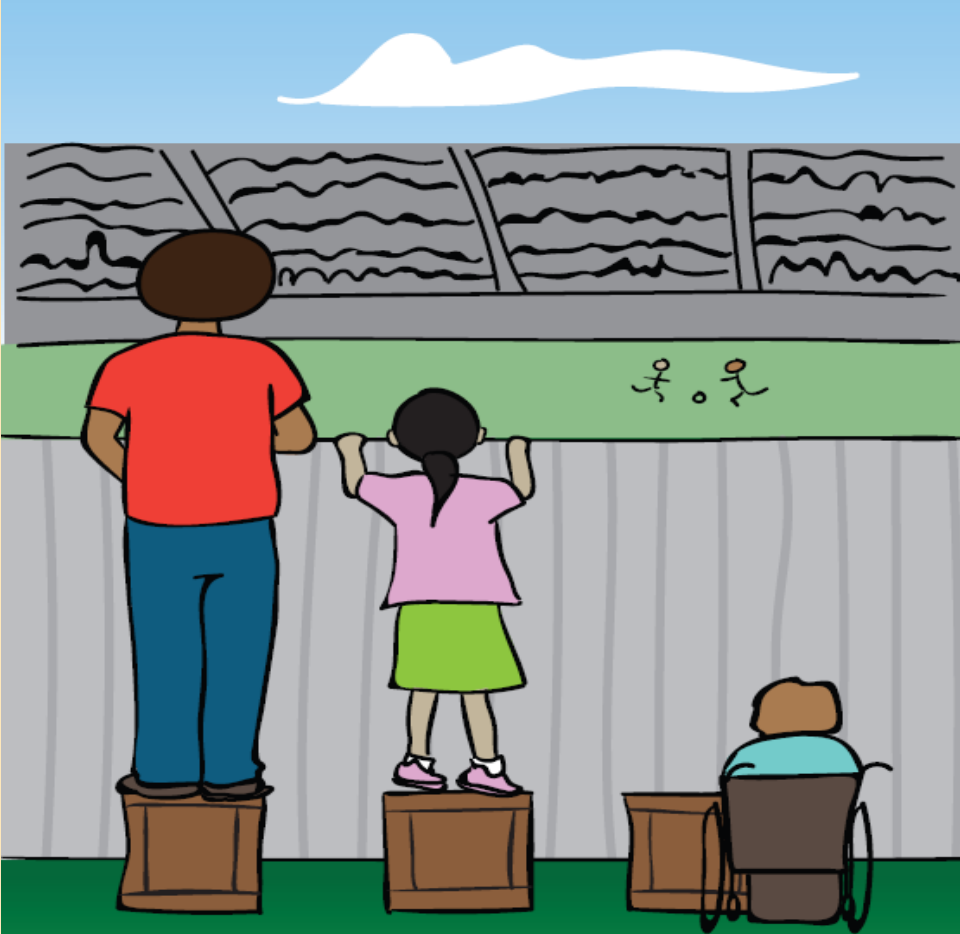


Cultural Diversity Considerations for the Intersection between Employment and Mental Health

Eduardo Ortiz, PhD
May 2021





EQUALITY

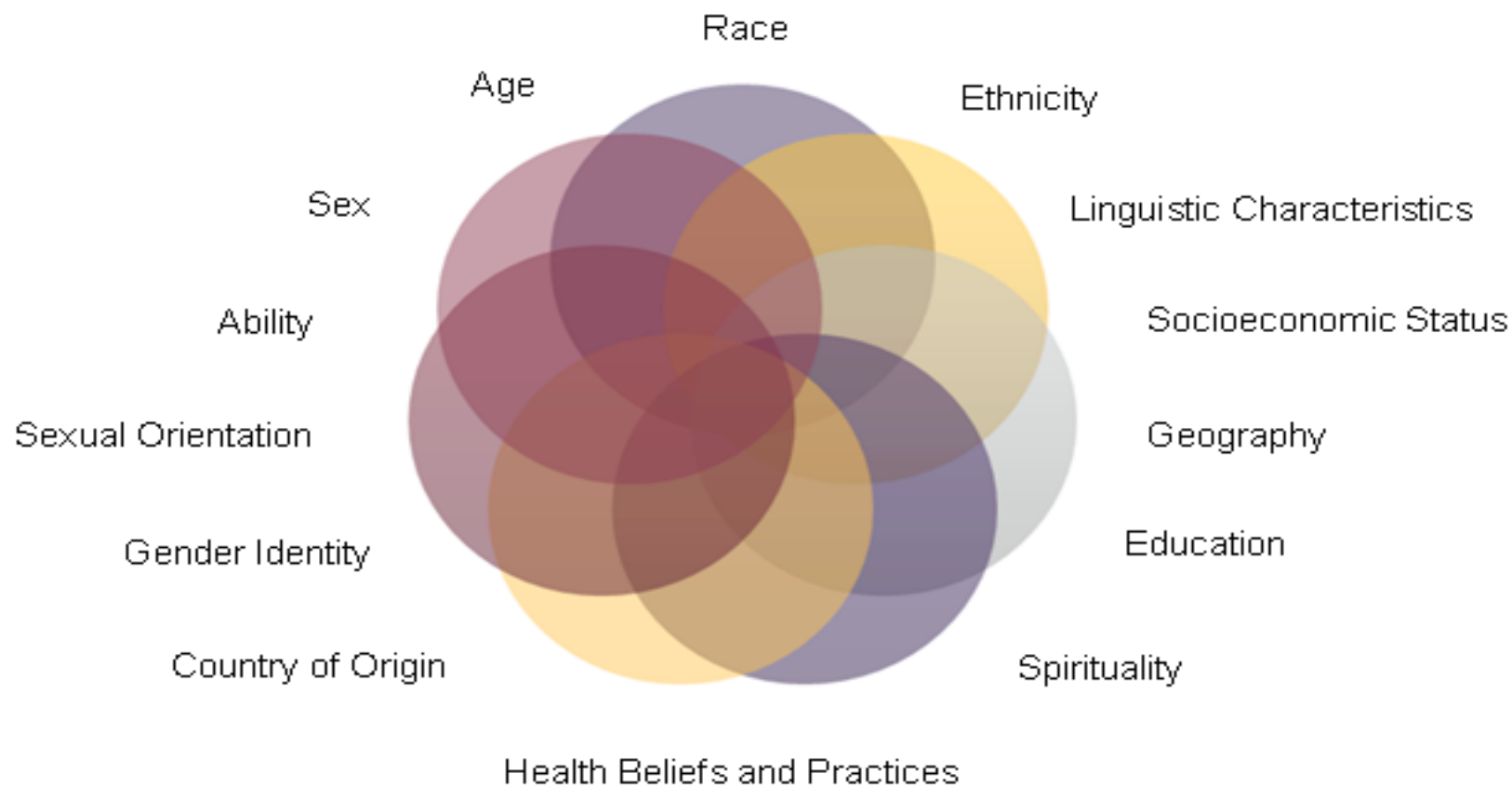


EQUITY

Overview

- Social Demographics:
 - Trends and Changes
- Selected Social Determinants of Health
- Approaches to Solutions
 - Cultural Humility
 - CLAS Standards
- Other Practices, Employment Challenges, and Resources

Elements of Culture



Why are Cultural Diverse Factors Important for Health, Healthcare, and Employment Outcomes?

- Demographics
- Access to Care
- Quality of Care
- Positive Business outcomes \$\$\$
- Reduce Health Inequities
- Cost benefit (economic factor) \$\$\$
- Legislation (policies/law mandates)
- Reducing Litigation... and Social Justice

Relevant Cultural Demographics: *Changes and Trends*

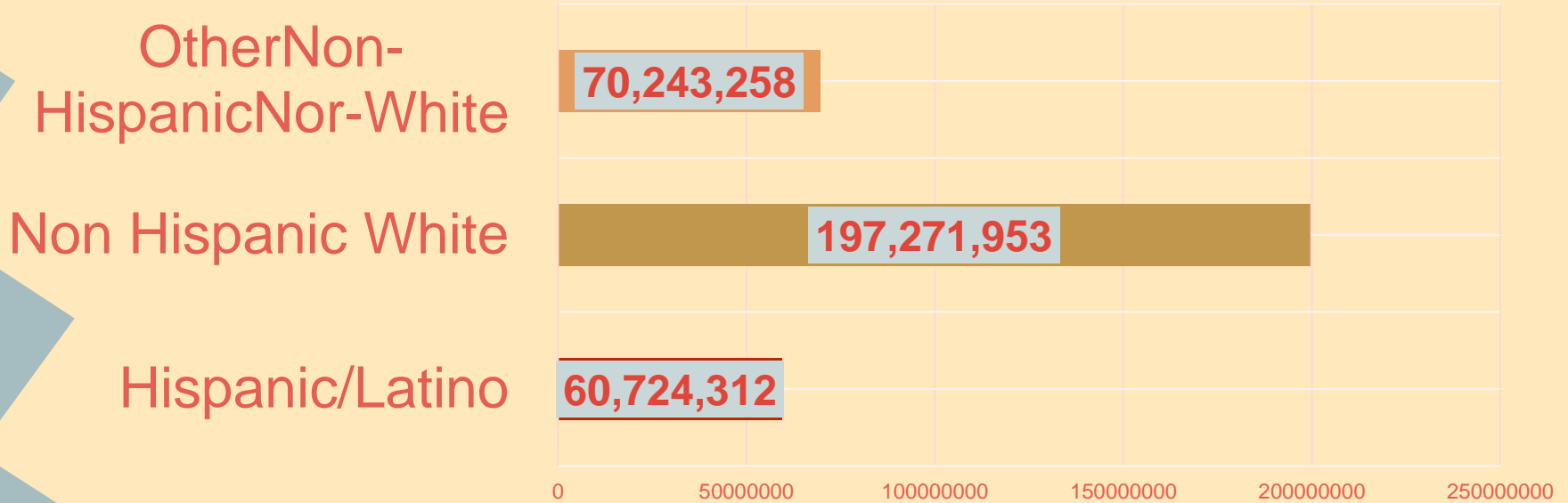
Local, Regional, and National Levels

- Race Ethnicity
 - Age
 - Rural-Urban
- Family Structure
 - Abilities...

Race and Hispanic Origin *(US Census, 2019)*

White alone, percent, July 1, 2019	76.3%
Black or African American alone, percent, July 1, 2018, (V2018) <u>(a)</u>	13.4%
American Indian and Alaska Native alone, percent, July 1, 2018, (V2018) <u>(a)</u>	1.3%
Asian alone, percent, July 1, 2018, (V2018) <u>(a)</u>	5.9%
Hispanic or Latino , percent, July 1, 2018, (V2018) <u>(b)</u>	18.5%
Two or More Races, percent, July 1, 2018, (V2018)	2.8%
White alone, not Hispanic or Latino, percent, July 1, 2018, (V2018)	60.1%

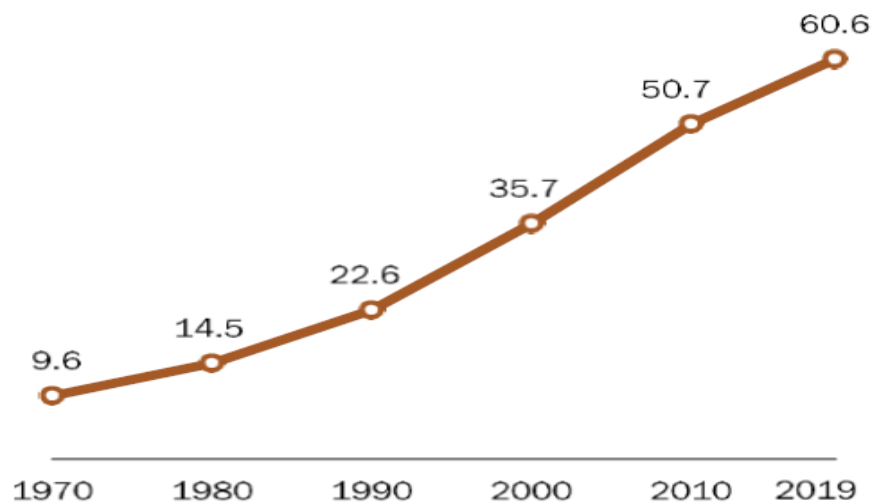
Hispanic/Latino population: the single largest minority group (18.5%)



Total population 328,239,523

More than 60 million Latinos live in the U.S.

In millions

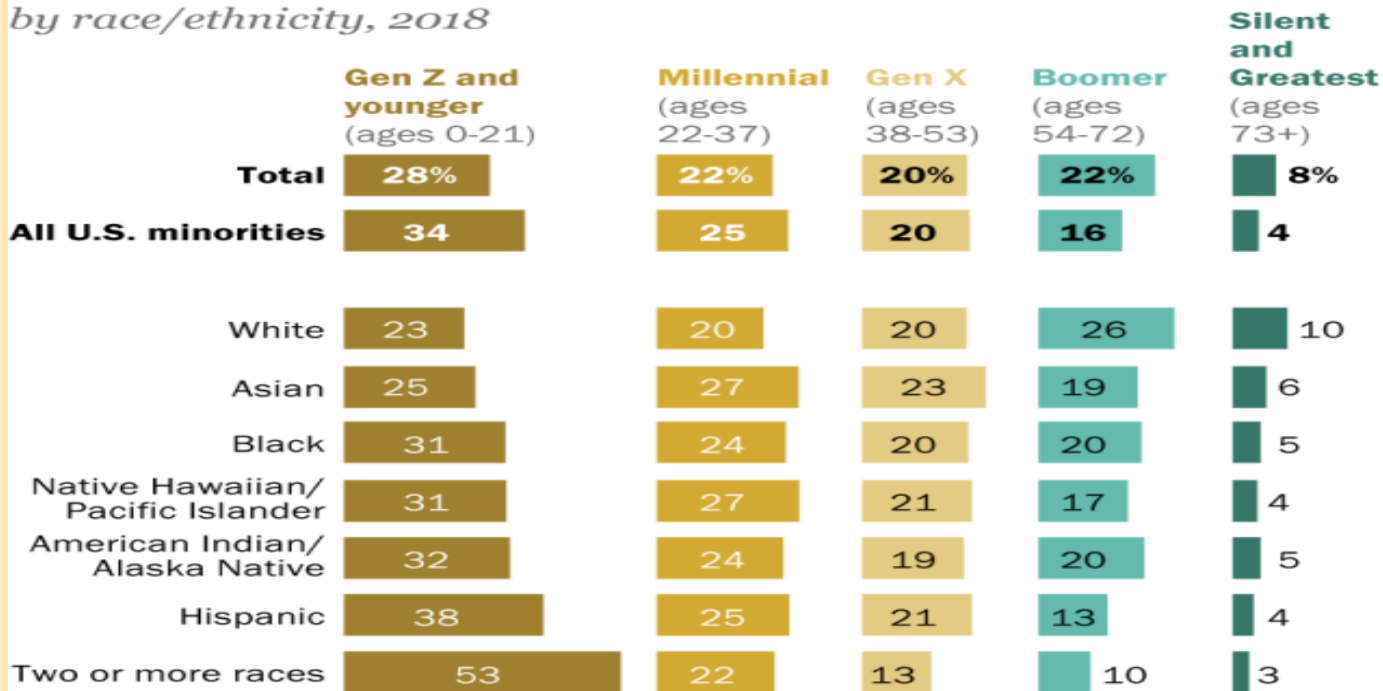


Note: Population estimates for 1990-2019 are as of July 1 for each year. Hispanics are of any race.

Source: Pew Research Center analysis of 1970-1980 estimates based on decennial censuses (see 2008 report “U.S. Population Projections: 2005-2050”), U.S. intercensal population estimates for 1990-1999 and 2000-2009, and U.S. Census Bureau Vintage 2010-2019 estimates.

Largest shares of U.S. minority groups are Millennials or younger

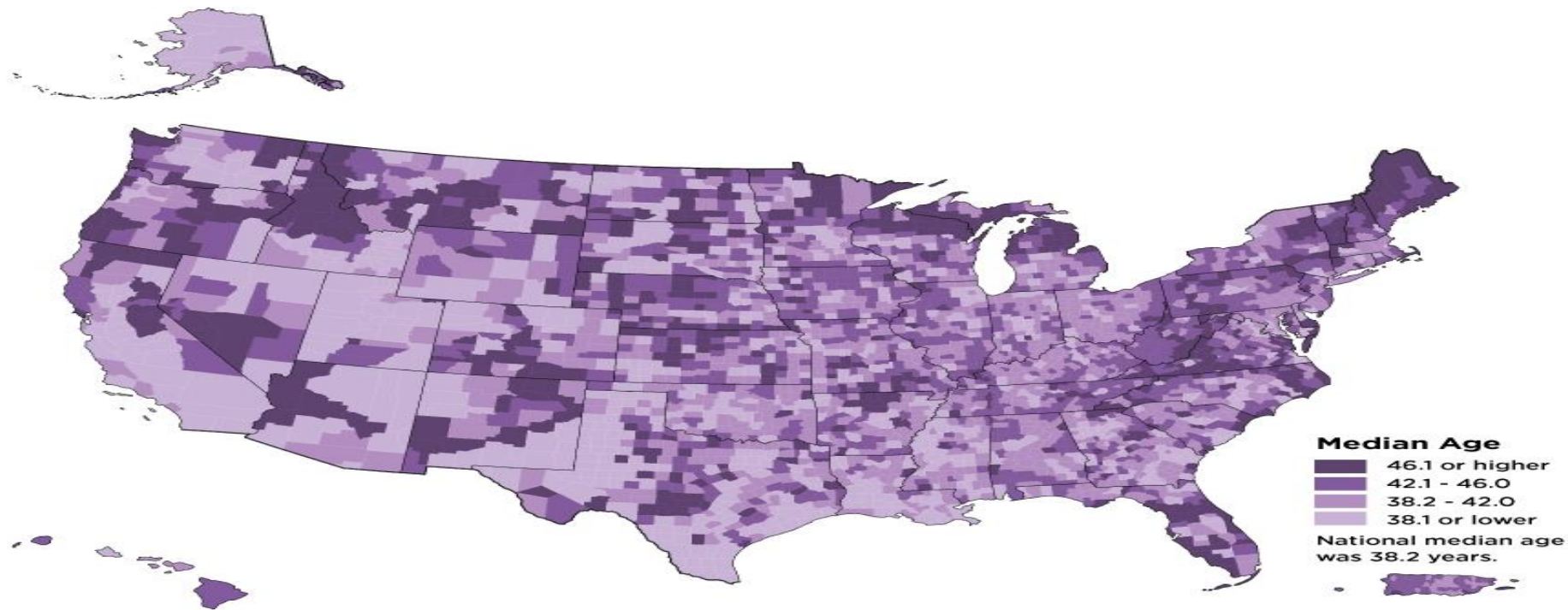
% of U.S. population belonging to each generation, by race/ethnicity, 2018



Note: Whites are single-race, non-Hispanic; minorities include all racial and ethnic groups except single-race non-Hispanic whites. Hispanics are of any race.
Source: U.S. Census Bureau population estimates as of July 1, 2018.

Youngest and Oldest Counties

Median Age of U.S. Counties in 2018



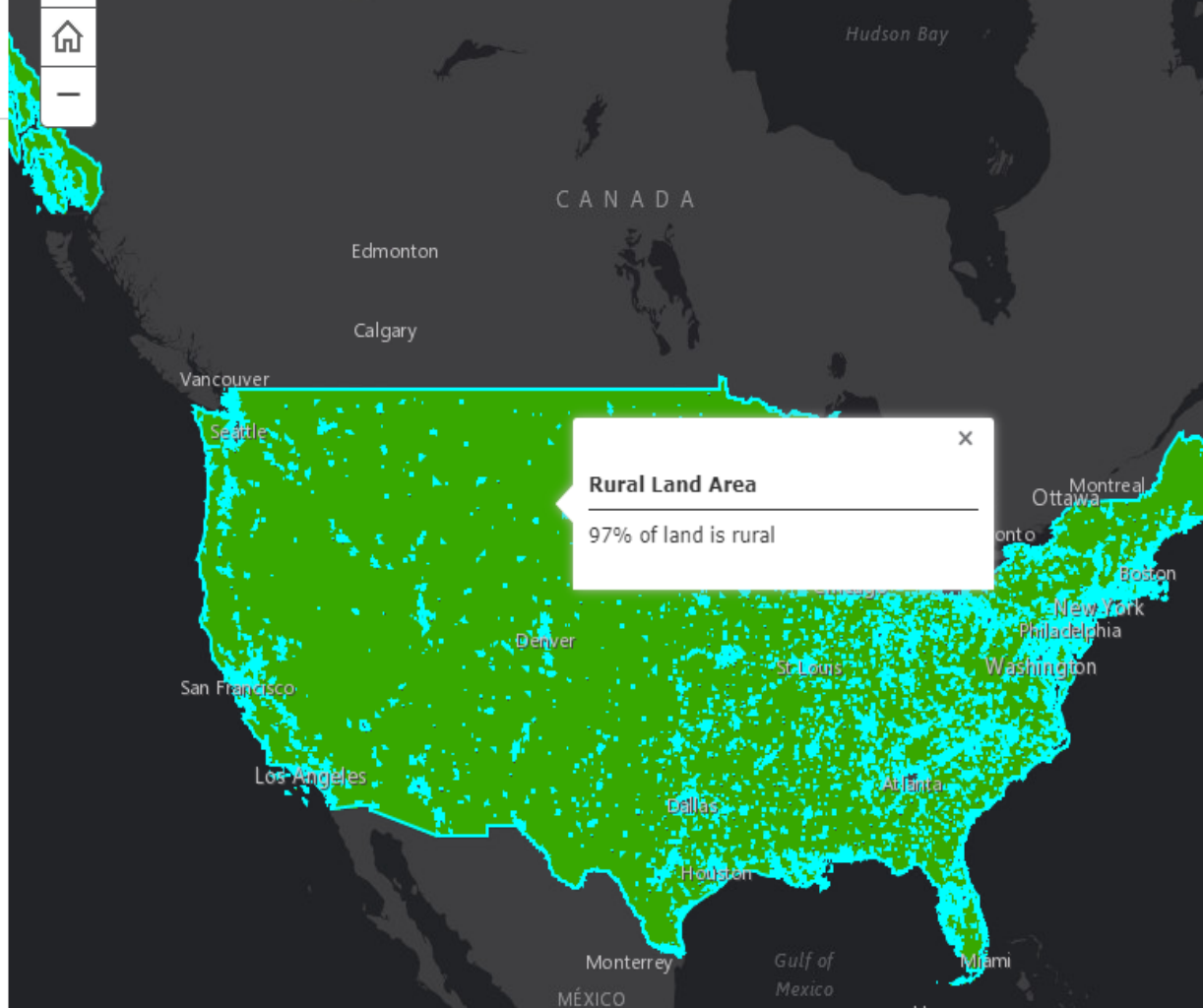
How Does the U.S. Census Bureau Define "Rural?"

The Rural Definition

For the average American, rural is an abstract concept of rolling hills and farmland rather than a concrete definition. Thus, it can be a difficult task trying to define the term "rural" and an even harder task trying to explain it.

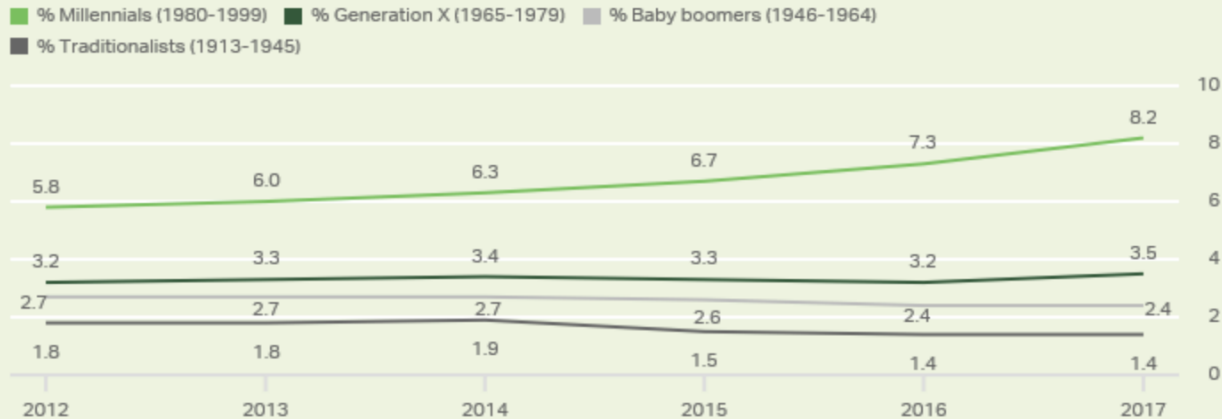
The Census Bureau defines rural as any population, housing, or territory NOT in an urban area. The green area on the map to the right represents all the area in the United States that is classified as rural based on this definition.

The Census Bureau's rural definition is closely tied to the urban definition. To fully understand the Census Bureau's concept of rural, you need to first understand how the Census Bureau defines and delineates urban areas.



LGBTQ Demographics

Percentage of Americans Identifying as LGBT, by Birth Cohort

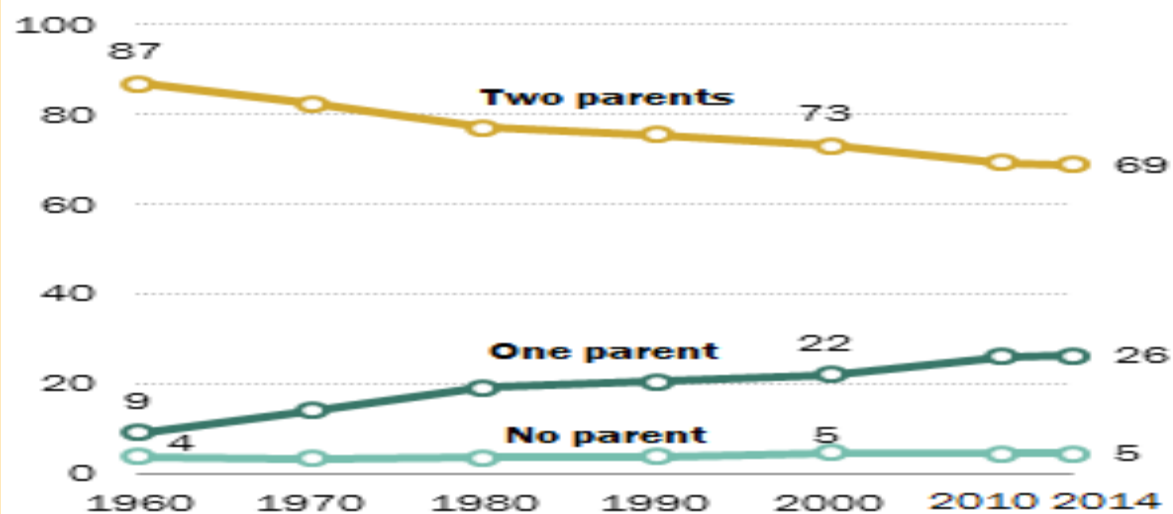


GALLUP DAILY TRACKING

LGBT identification is lower as age increases, although there is a particularly large jump between millennials and those in the next oldest generation, defined as Generation X.

The two-parent household in decline

% of children living with ...

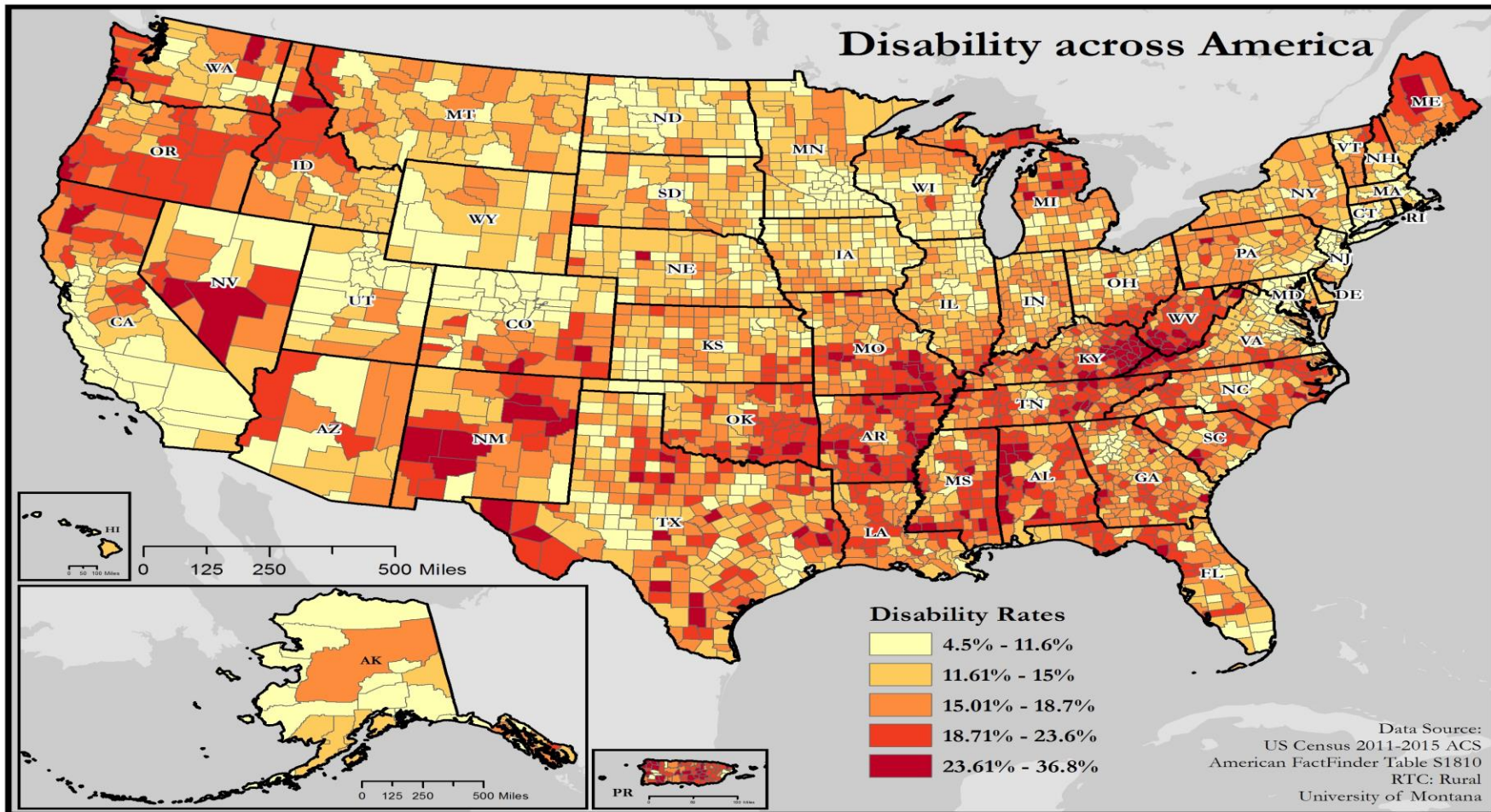


Note: Based on children under 18. From 1990-2014, a child living with cohabiting parents is counted as living with two parents. Prior to 1990 cohabiting parents are included in "one parent."

Source: Pew Research Center analysis of 1960-2000 Decennial Census and 2010 and 2014 American Community Survey (IPUMS)

PEW RESEARCH CENTER

Disability across America



Foreign Born

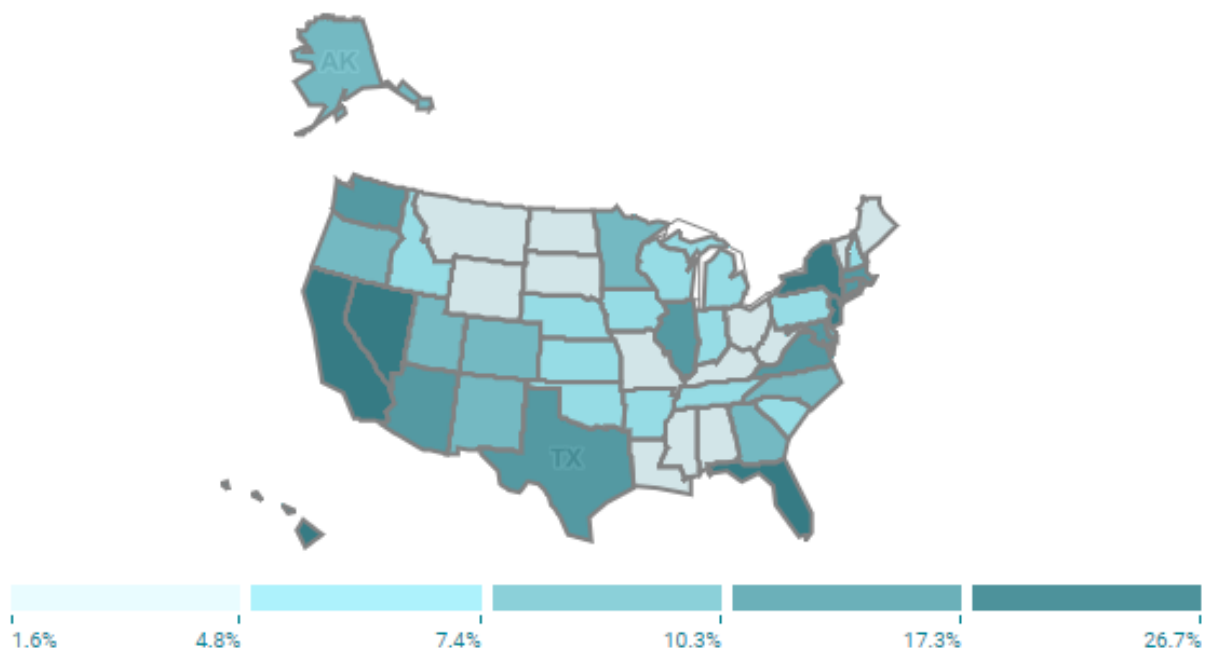
13.7% +/- 0.1% = 44'968,814 people

Foreign born in United States

Table: DP02

Table Survey/Program: 2019
American Community Survey 1-
Year Estimates

Foreign Born Population in United States by State



Map Survey/Program: 2019 American Community Survey 1-Year Estimates

Share / Export

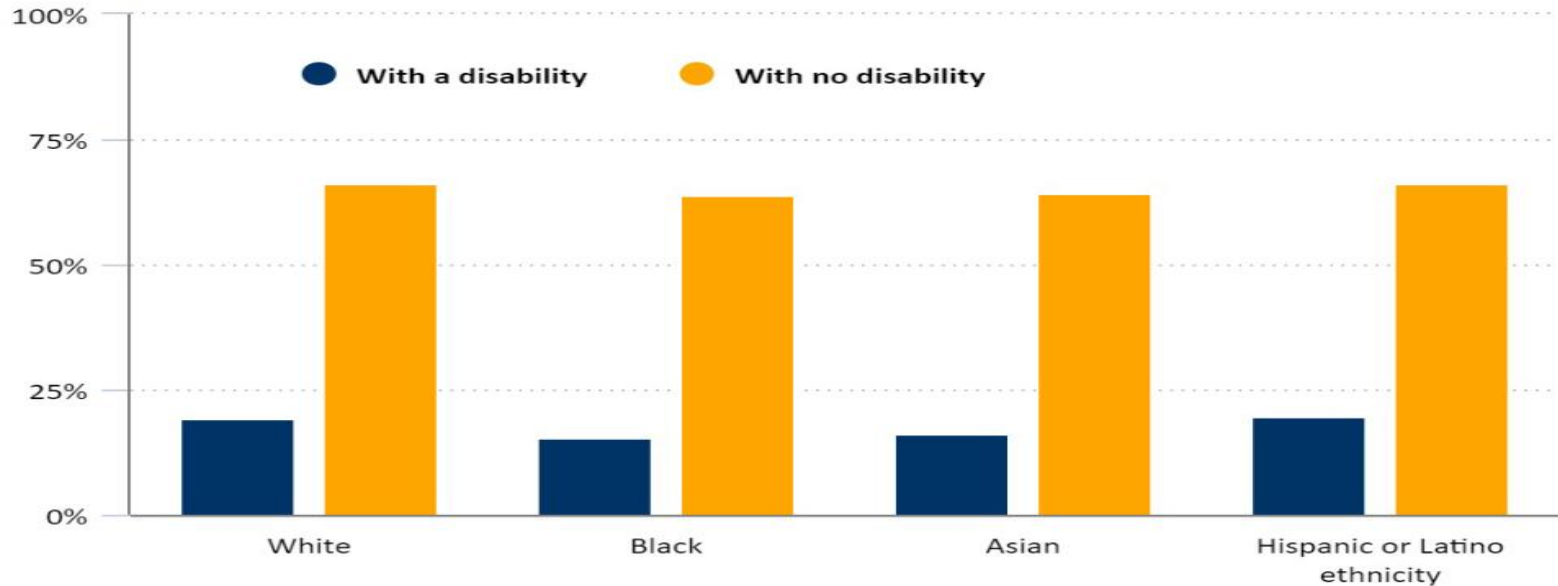
Customize Map

\$71 million word

- Willie Ramirez was only 18 and out with friends when he suddenly developed a splitting headache... They rushed him to the hospital, but he woke up paralyzed. He will never walk again. A brain bleed left him a quadriplegic for life. So, when they told the emergency room doctors that they believed Willie was “intoxicado,” he was treated for a drug overdose. As [Health Affairs](#) explains, “intoxicado” is not the same as “intoxicated.”

Employment/Disability/Diversity Intersection data

Employment-population ratios by race, Hispanic or Latino ethnicity, and disability status, 2017 annual averages



Note: People whose ethnicity is identified as Hispanic or Latino may be of any race.
Click legend items to change data display. Hover over chart to view data.
Source: U.S. Bureau of Labor Statistics.



Social Determinants of Health

- **Social determinants of health (SDOH)** are conditions in the places where people live, learn, work, and play that affect a wide range of health and quality-of life-risks and outcomes.

— <https://www.cdc.gov/socialdeterminants/about.html>



Real Median Household Income by Race and Hispanic Origin of Householder: 1967 to 2017

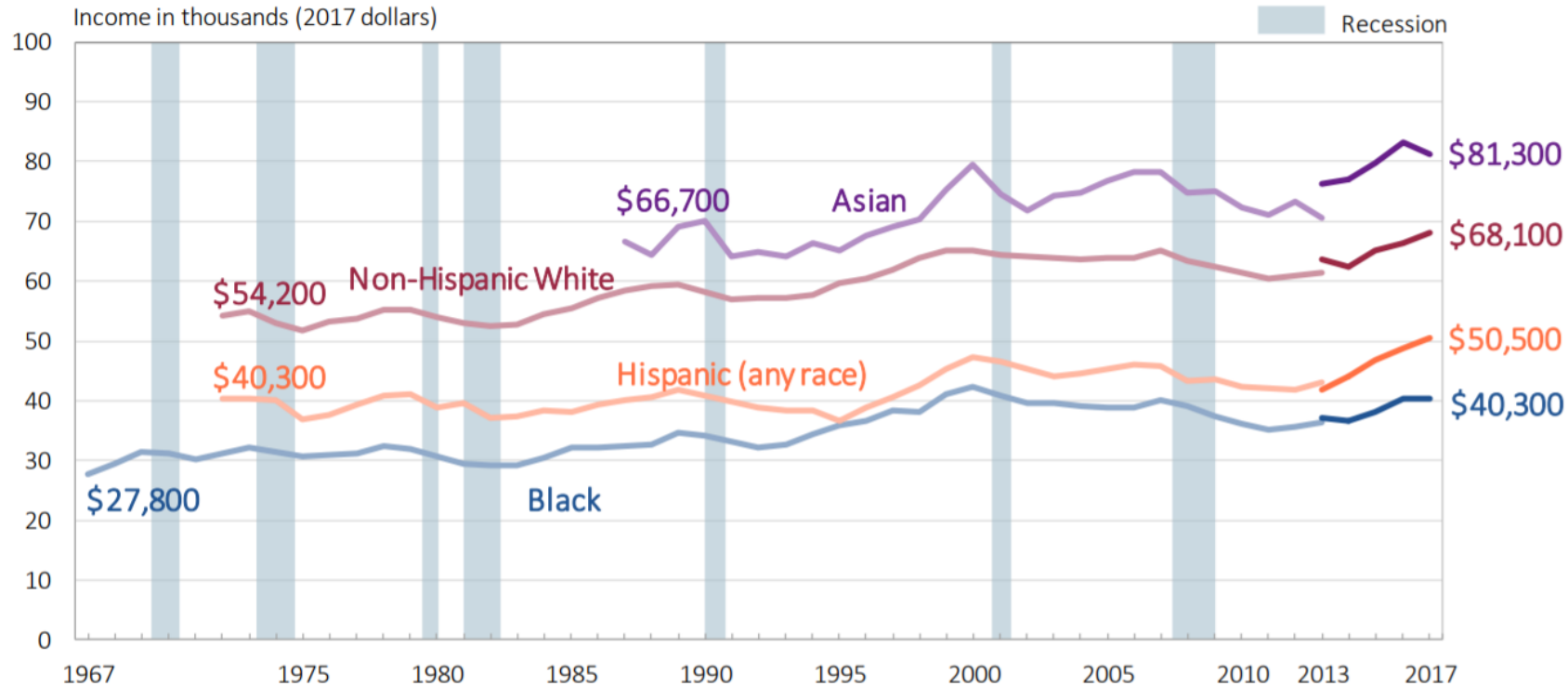
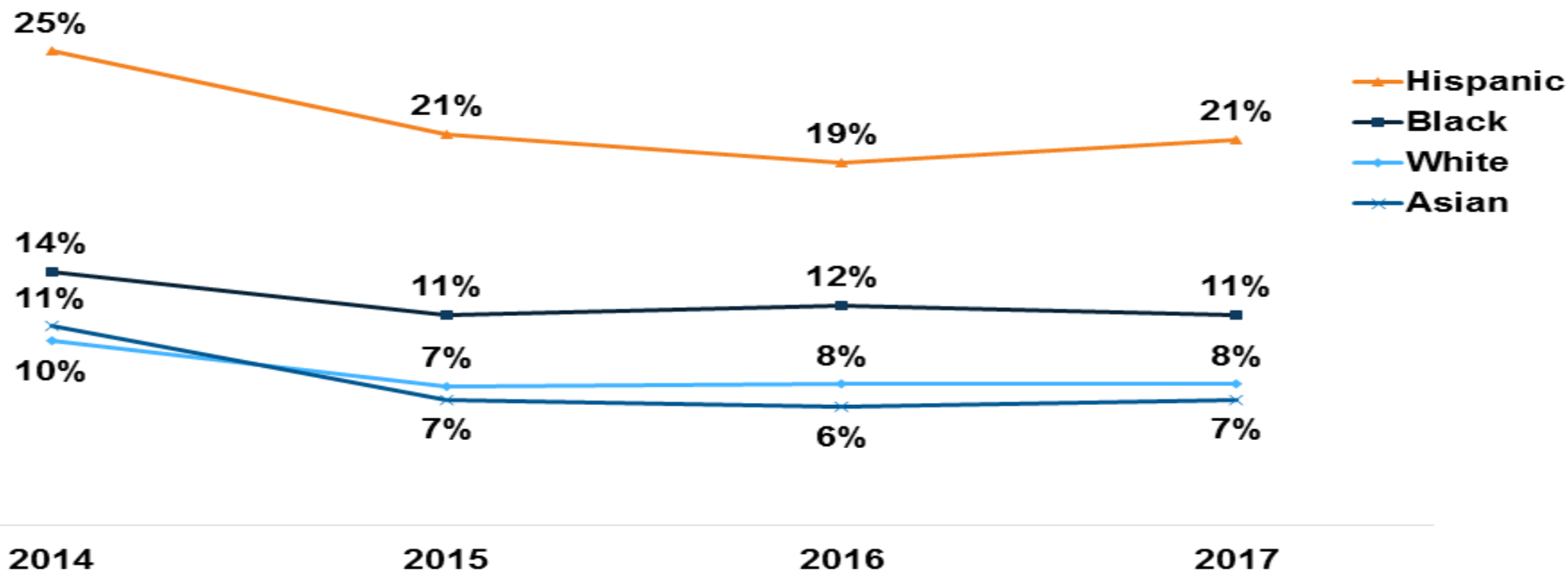


Figure 8

Uninsured Rates for the Nonelderly Population by Race and Ethnicity, 2014-2017

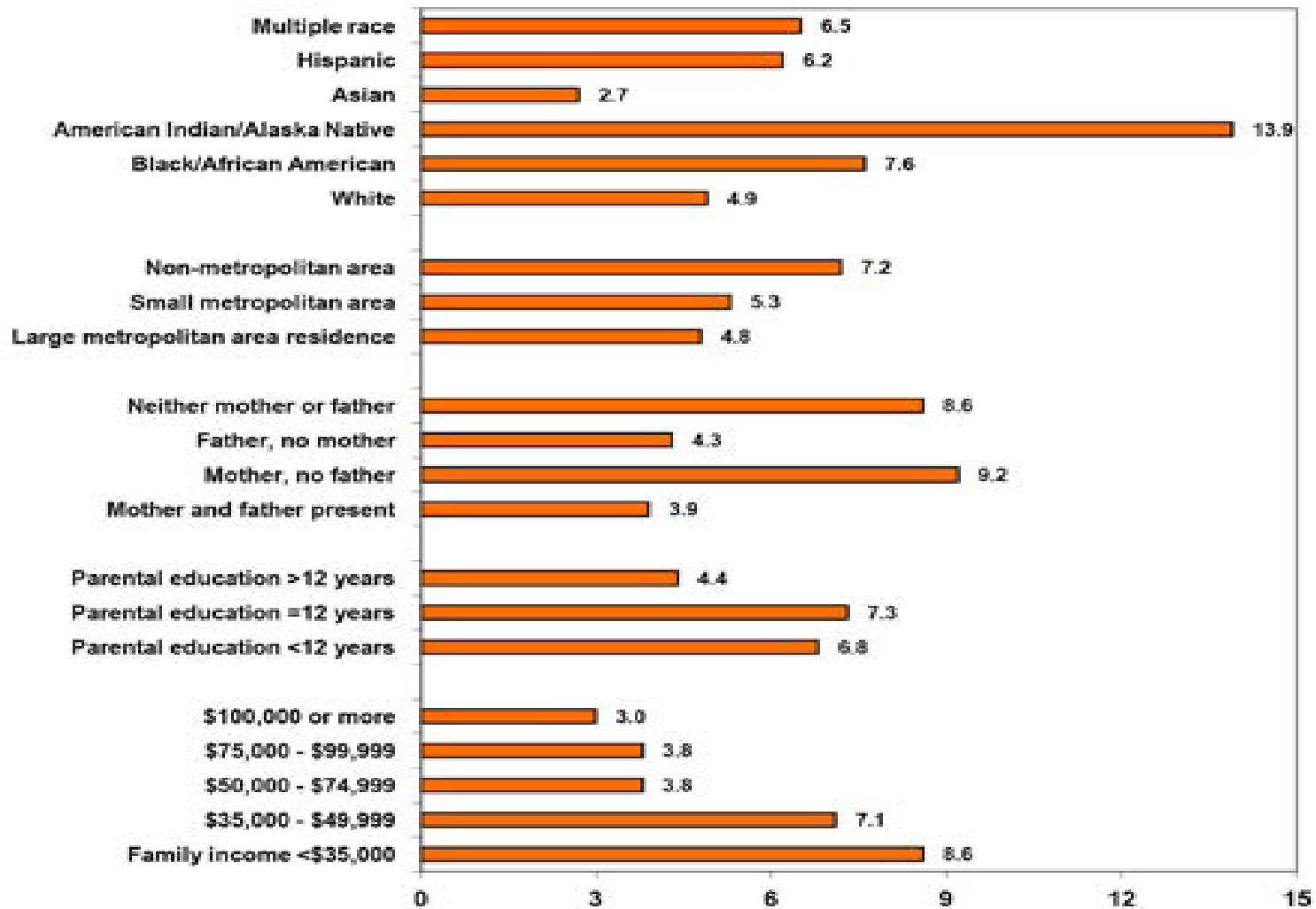


NOTE: Includes individuals ages 0 to 64. Uninsured rate based on coverage level at time of interview.

SOURCE: Robin A. Cohen, Emily P. Zammitti, Michael E. Martinez, *Health Insurance Coverage: Early Release of Estimates From the National Health Interview Survey, 2017*, (Rockville, MD: National Center for Health Statistics, May 2018),

<https://www.cdc.gov/nchs/data/nhis/earlyrelease/insur201805.pdf>.

Emergency
Room (ER)
Visits by
Sociodemographic
Factors,
Children
<18 Years
of Age,
*United States,
2015 National
Health
Interview
Survey*



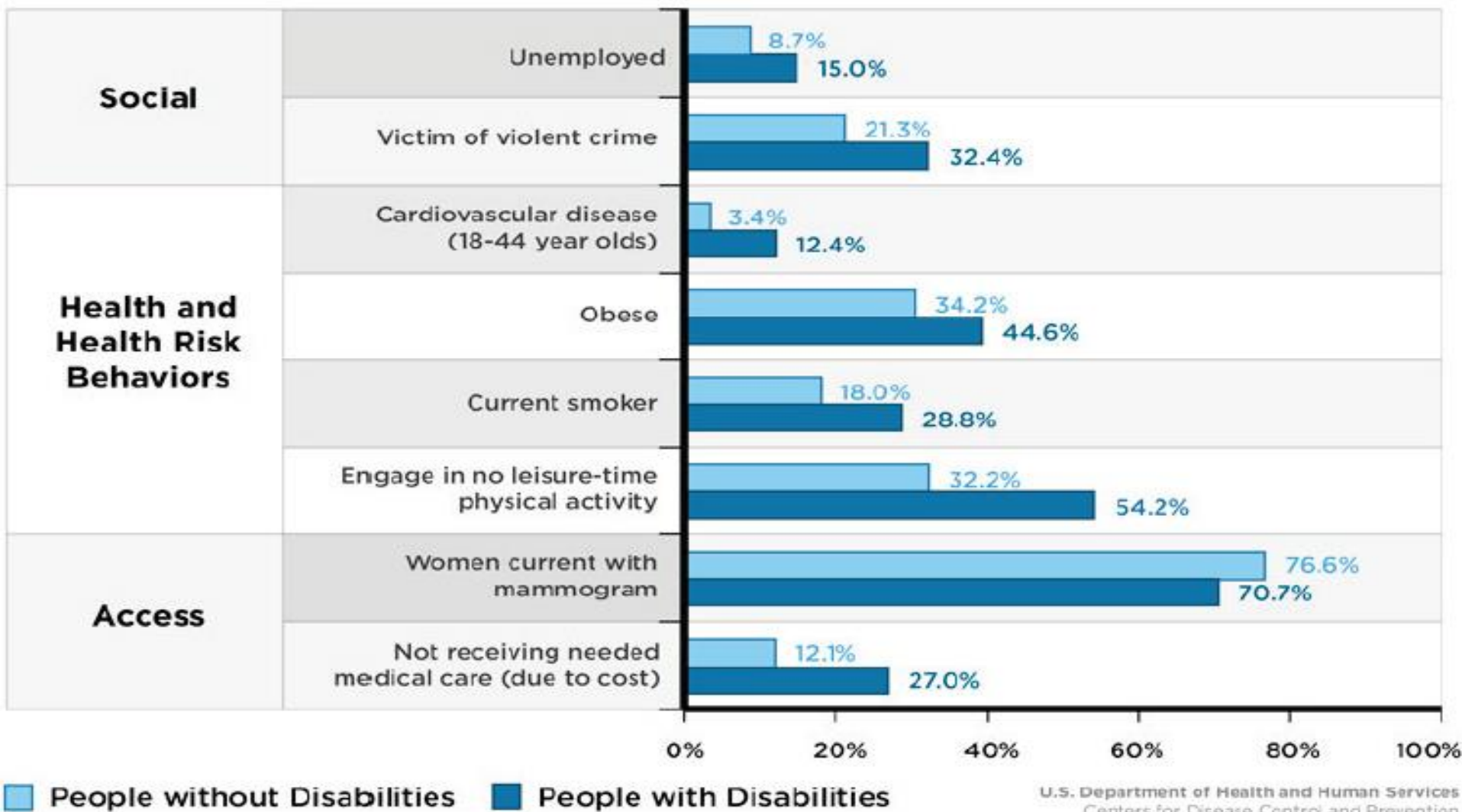


Health Issues in Rural Areas

- Compared with their urban counterparts, residents of rural counties are:
 - ▶ Older,
 - ▶ Poorer,
 - ▶ More likely to be overweight or obese, and
 - ▶ Sicker (Meit, et al., 2014).
- Rural residents also have:
 - ▶ Higher injury rates (NCHS, 2017).
 - ▶ Higher smoking rates (NCHS, 2017).
 - ▶ Higher rates of uninsurance (NCHS, 2017)
 - ▶ Higher rates of suicide (Kegler, et al., 2017).
 - ▶ Higher rates of opioid misuse (Warshaw, 2017).

LGBTQ Health

- Increased risk for mental health problems, including suicide
 - 48% of LGB youth seriously considered; compared to 13% of heterosexual youth (CDC, Youth Risk Survey 2017)
- Increased substance abuse
- Increased risk for certain cancers
- Increased risk for sexually transmitted diseases





***Micro-Aggressions in
Everyday Life***



Microaggressions

- Microaggressions have been defined as brief and common daily verbal, behavioral, and environmental communications, whether intentional or unintentional, that transmit hostile, derogatory, or negative messages to a target person because they belong to a stigmatized group.

I've spoken at three different schools in the past month, and the thing that I mostly start out with is that people have said, 'What do you like to be called—disabled, handicapped, challenged?' I'm like, just call me Susan; that's all I want to be—just Susan/'

From chapter 11 *Microaggressive Experiences of People with Disabilities*

Case 7

Lisa, Nevada An employee once told me, “You can clean my house and cook for me, but you will never tell me what to do.” I was the Charge Nurse; I am Hispanic and Native American.

The Cultural Iceberg

Surface Culture

Food
Flags Festivals
Fashion Holidays Music
Performances Dances Games
Arts & Crafts Literature Language

Deep Culture

Communication Styles and Rules
facial expressions gestures eye contact
personal space touching
body language tone of voice
handling and displaying of emotion
conversational patterns in different social situations

Notions of:
courtesy and manners
friendship leadership
cleanliness modesty beauty

Concepts of:
self time past and future
fairness and justice
roles related to age, sex, class, family, etc.

Attitudes toward:
elders adolescents dependents
rule expectations work authority
cooperation vs. competition
relationships with animals age sin death

Approaches to:
religion courtship marriage raising children
decision-making problem-solving

Implicit/Unconscious Bias

• Definition

- Defined as “**prejudice** or unsupported judgments in favor of or against one thing, person, or group as compared to another, in a way that is usually considered unfair...”
 - Occurs automatically as the brain makes quick judgments based on past experiences and background
 - Refers to attitudes and beliefs that occur outside of our conscious awareness and control.

Implicit/Unconscious Bias

- Before the clinical encounter
 - Provider's biased perceptions of patients/clients
 - Provider's biased statistical interpretations

• *Taken & adjusted from the Biased Care model (Matthew, D.B. 2015)*

Implicit/Unconscious Bias

- During the clinical encounter
 - Provider's implicit biases influence their conduct and communication
 - Patient/client's implicit biases influence their conduct and communication with providers

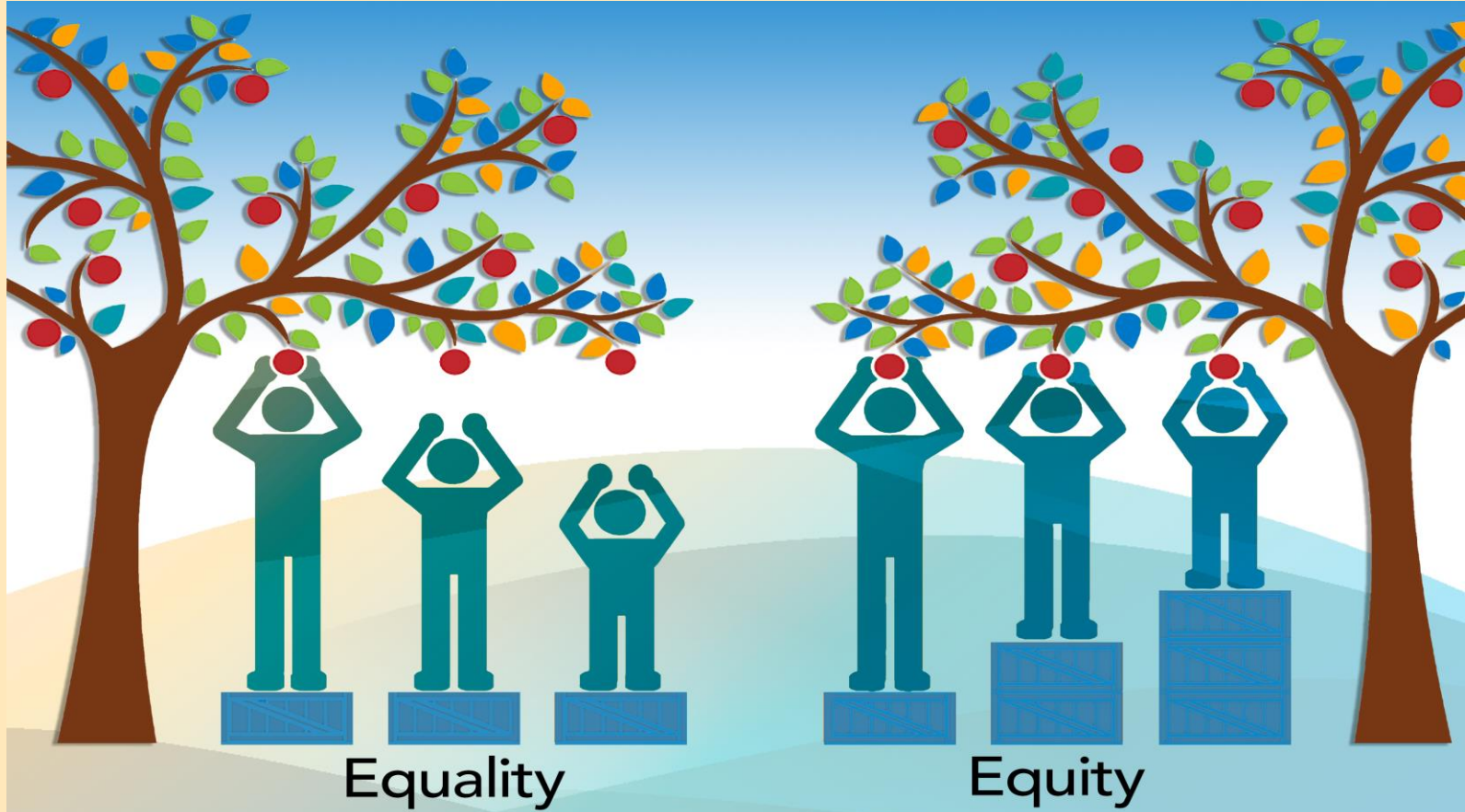
• *Taken & adjusted from the Biased Care model (Matthew, D.B. 2015)*

Implicit/Unconscious Bias

- Beyond the clinical encounter
 - Provider's implicit biases influence their diagnostic and treatment decisions
 - Implicit biases influence patients/clients' satisfaction, adherence, compliance, and follow up

• *Taken & adjusted from the Biased Care model (Matthew, D.B. 2015)*

APPROACHES TO SOLUTIONS



The National CLAS Standards

Principal Standard

Standard 1

Governance, Leadership, and Workforce

Standards 2-4

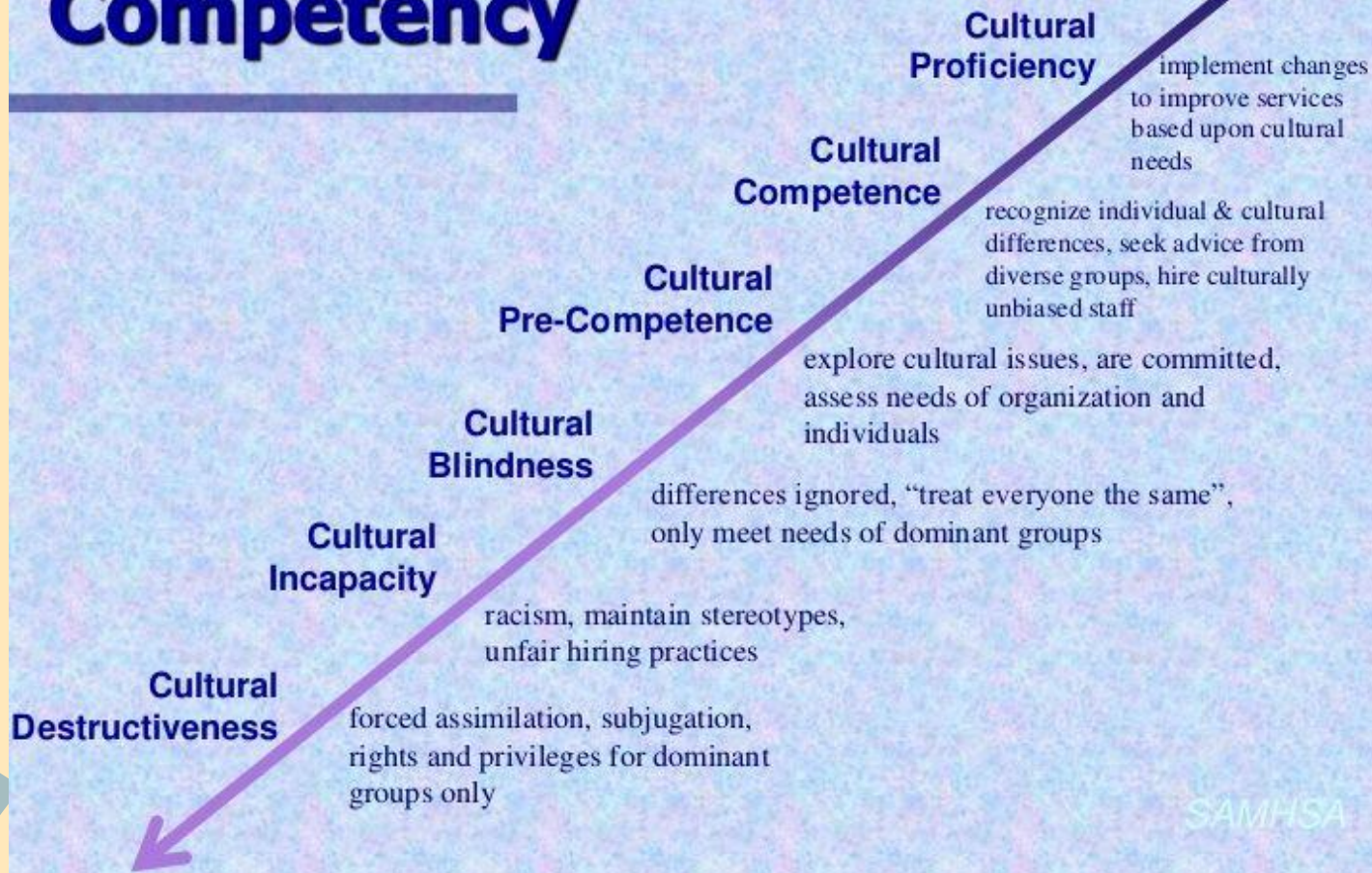
Communication and Language Assistance

Standards 5-8

Engagement, Continuous Improvement, and Accountability

Standards 9-15

Continuum of Cultural Competency



Cultural Humility

A life-long learning process which incorporates openness, power-balancing, and critical self-reflection when interacting with people for mutually beneficial partnerships & institutional change.

OTHER Best Practices...

- Cultural Brokers
 - Ex. Promotoras (Health Facilitators)
- Mentorship for people from underrepresented groups
- Translation/interpretation...

MHDD project

National Training Center

- Developed Products: Efforts and *Thinking about specific diverse cultural population (Hispanic/Latinx)*
 - Storytelling interviews
 - Fact Sheets
 - Webinars (in process)
 - Follow up efforts

The MHDD Digital Storytelling
Series Welcomes:



Isabel Allende
Magna, UT

**La respuesta de Isabel y cómo se
veían los síntomas de su hijo**
**Isabel's Response and How
Her Son's Symptoms Looked**



The MHDD Digital Storytelling
Series Welcomes:



Albina
Utah

**Las experiencias de Albina con respecto
al abuso y la búsqueda de ayuda**

**Albina's Experiences with
Abuse and Seeking Help**



The MHDD Digital Storytelling
Series Welcomes:



Teresita
Georgia

**Transición, expectativas y lo
que aprendió Teresita**

**Transition, Expectations,
and What Teresita Learned**



The MHDD Digital Storytelling
Series Welcomes:



Consuelo
Utah

**Lo que Consuelo quiere
que los demás sepan y los
desafíos que enfrentan las familias**

**What Consuelo Wants Others
to Know and Challenges
that Families Face**



MHDD project Developed Products: Efforts and *Thinking about specific diverse groups*

- Fact Sheets

- Factores que afectan la salud mental de las personas hispanas/latinx a lo largo de la vida (*Mental Health Factors Affecting Hispanic/Latinx Individuals Across the Life Span*)

MHDD project Developed Products: Efforts and *Thinking about specific diverse groups*

- Fact Sheets

- Empleo de personas hispanas/latinx con discapacidades: barreras y recomendaciones
(Employment and Hispanic/Latinx Individuals with Disabilities: Barriers and Recommendations)

Developed Products: Efforts and *Thinking about specific diverse groups*

- Fact Sheets... Immigration

“Some common mental health concerns in immigrants are depression, anxiety, and post-traumatic stress disorder. There are certain experiences related to being an immigrant that can affect their mental health. For example, immigrants may stress about needing to hide a family member’s immigration status. A person’s immigration status says if they meet legal requirements to be in the country. Migration is a process and there are challenges that can happen before, during, or after relocating. In [Blanca’s digital storytelling episode](#), she talks about struggles she experienced before and after migrating. One challenge she faced was trying find services for her daughter with a disability”

Closing and Questions?



Thanks!